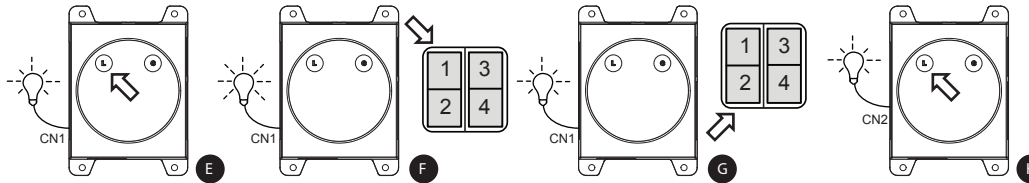
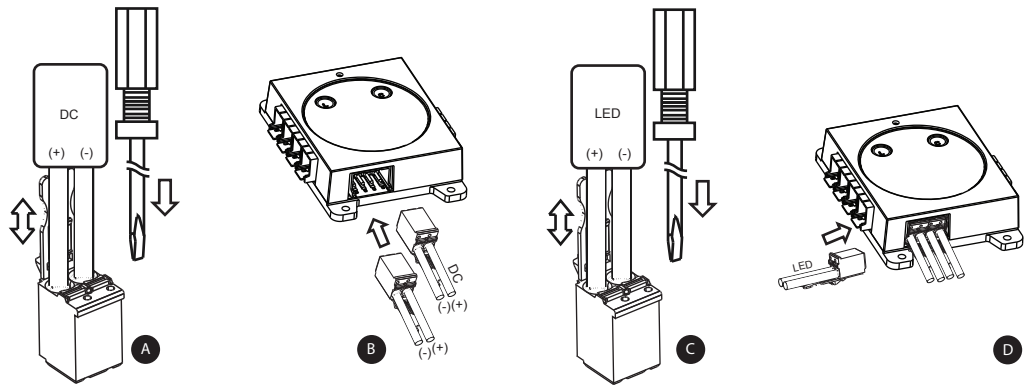




Wireless DC multi-channel PWM dimmer

WPD-06KIT

Operating Guide



29/07/2014

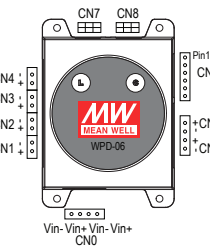
English

Please take the time to carefully read and follow the operating guide.

What's in the Box

- 1) WPD-06 X 1
- 2) EnOcean Wireless batteryless 2 Key (4 switches) X 1
- 3) WAGO - 2092-1102/002-000 plug x 8

Connector Description



Function	Mating connector	Wire thickness	
CN0	Vin	WAGO - 2092-1104/002-000 or 2092-1102/002-000 x 2	0.2-2.5mm ²
CN1	Vout_channel1	WAGO - 2092-1102/002-000	0.2-2.5mm ²
CN2	Vout_channel2	WAGO - 2092-1102/002-000	0.2-2.5mm ²
CN3	Vout_channel3	WAGO - 2092-1102/002-000	0.2-2.5mm ²
CN4	Vout_channel4	WAGO - 2092-1102/002-000	0.2-2.5mm ²
CN5	Vout_channel5	WAGO - 2092-1102/002-000	0.2-2.5mm ²
CN6	Vout_channel6	WAGO - 2092-1102/002-000	0.2-2.5mm ²
CN7	N.C.		
CN8	N.C.		
CN9	Push dimming and other control	WAGO - 2091-1106/002-000	0.2-1.5mm ²

Getting Started

- 1) Select a proper DC power source (LED driver or adaptor or power supply) based on the load (LED lamps). For example, Mean well LED driver LPF-90-24 can be used for 90 Watt 24V LED strip.
- 2) Insert the cable of DC power source into the plug and make sure the polarity is correct. **A**
- 3) In case total output current is higher than 16 A, take second plug and re-do 2) otherwise go to 4).
- 4) Push plug(s) of DC power source into connector CN0 of unit. **B**
- 5) Insert the cable of LED strip into the plug and make sure the polarity is correct. **C**
- 6) Push plug(s) of LED strip into connector of specific channel. **D**

Setting

The following step is assuming that one LED strip connected to Channel 1 (CN1) and make sure DC source is turn ON:

- 1) Long press L button on dimmer and LED connected to Channel 1 is now blinking. **E**
It means now Channel 1 is at pairing mode.
- 2) Press on switch 1 to pair "turn on and dim up" to Channel1. LED on Channel 1 is continuous ON. **F**
Press on switch 2 to pair "turn off and dim down" to Channel1. LED is blinking again. **G**
Now this wireless batteryless switch is paired with Channel 1.
In case there is another switch needs to be paired, re-do the step 2).
- 3) Press L button on dimmer. The pairing is now moving to Channel 2 with blinking. **H**
- 4) Press L button on dimmer. The pairing is now moving to Channel 3 with blinking.
- 5) Press L button on dimmer. The pairing is now moving to Channel 4 with blinking.
- 6) Press L button on dimmer. The pairing is now moving to Channel 5 with blinking.
- 7) Press L button on dimmer. The pairing is now moving to Channel 6 with blinking.
- 8) Press L button on dimmer to finish the pairing.
- 9) Now the system is set and ready to control the LED lamp on channel 1.

Clear Setting

C (Clear) Button: In pairing mode, a long press (1.5sec) on the C button erases the pairing of the blinking output. In normal mode, a long press (1.5sec) on the C button erases the 6 outputs of the dimmer and it will automatically enter the pairing mode on Channel 1. Press L button 6 times to exit the pairing mode. Remark: It is also possible to erase one switch from one channel (without erasing the other wireless batteryless switches paired on this output)

Warnings

To reduce the risk of fire or electric shock, do not expose the unit to rain or moisture. Do not expose this unit to dripping or splashing and do not place objects filled with liquids, such as vases, on the unit. Liquids can cause a failure and/or a fire hazard.

Cautions

This unit must be installed by a qualified electrician. This unit is not suitable for constant current LED lamps applications.

Specifications

Output channel: Six(6) independent dimmable channels
 Output voltage: depending on input
 Output current: 4.5 A per channel; 27 A in total
 Power requirements: DC 10-32 V SELV, Maximum 27.5 A
 Mating Plug: WAGO 16A 0.2 -2.5 mm2 female types with gripping plate and sliding connector release
 Wireless dimming control
 For more specifications, refer to <http://www.meanwell.eu/search/WPD-06/default.htm>

Design and specifications are subject to change without notice.

On trademarks

EnOcean are trademarks of EnOcean GmbH
 WAGO are trademarks of WAGO Kontakttechnik GmbH
 In addition, system and product names used in this manual are, in general, trademarks or registered trademarks of their respective developers or manufacturers. However, the ™ or © marks are not used in all cases in this manual.

For Customers in Europe

Notice for the customers in the countries applying EU Directives
 Manufacturer: Mean Well Europe B.V. Langs de Werf 8, 1185XT Amstelveen, The Netherlands
 For EU product compliance: Mean Well Europe B.V. Langs de Werf 8, 1185XT Amstelveen, The Netherlands



Hereby, Mean Well Europe B.V., declares that this WPD-06 Wireless DC multi-channel PWM dimmer is in compliance with the essential requirements and other relevant provisions of Directive 1999/5/EC. For details, please access the following URL:

<http://www.meanwell.eu/search/WPD-06/default.htm>

This product has been tested and found compliant with the limits set out in the EMC regulation for using connection cables shorter than 2 meter.

Disposal of Old Electrical & Electronic Equipment (Applicable in the European Union and other European countries with separate collection systems)



This symbol on the product or on its packaging indicates that this product shall not be treated as household waste. Instead it shall be handed over to the applicable collection point for the recycling of electrical and electronic equipment. By ensuring this product is disposed of correctly, you will help prevent potential negative consequences for the environment and human health, which could otherwise be caused by inappropriate waste handling of this product. The recycling of materials will help to conserve natural resources. For more detailed information about recycling of this product, please contact your local Civic Office, your household waste disposal service or the shop where you purchased the product.