

Product Information **ÖKO 8 SOLAR**

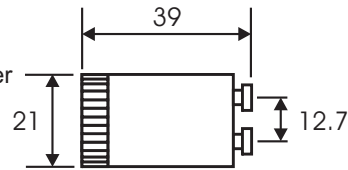
Electronic starter for 4-180W single fluorescent lamp circuits specially for using in sunbeds.

The soft start system utilised in the ÖKO 8 electronic starter first pre-heats the lamp cathodes to working temperature, before applying a controlled voltage pulse to strike the arc. This method of ignition prevents cathode damage and significantly lengthens lamp life. Additionally, a safety monitoring system shuts down the system in the event of a fault and prevents dangerous overheating and the annoying flashing associated with glow type starters. Refined circuit methods allow us to provide a 10 year no quibble guarantee for this product which has a proven design life exceeding 20 years.

Housed in a two-pin canister with dimensions in accordance to IEC155, for the direct replacement of glow starters without circuit modification.

Dimensions & materials :

Canister: Polycarbonate, translucent amber
 Printing: Gold
 Base: Polycarbonate
 Pins: Nickel plated brass

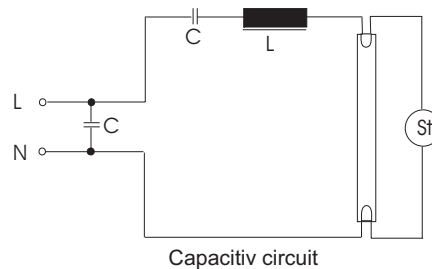
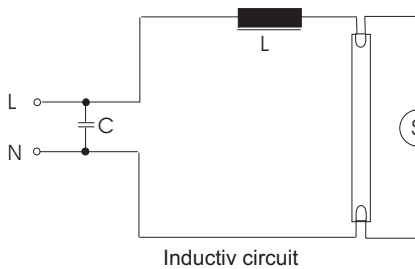


All dimensions in millimetres

Technical Data :

Operating voltage : 200 - 250 V AC 50/60 Hz
 Preheat time : 2.4 seconds nominal @ 20°C
 Pulse height : 1500 V maximum
 Safety shutdown : Within 3.5 seconds @ 20°C
 Lamp types : 4-180 W Linear T5/T8/T12
 -only suitable for lamps with parallel compensation
 -find more details and actual lamp list under www.palmstep.com
 Operating temperature : - 5 to + 85°C*
 Storage temperature : - 50 to + 105°C*

Approvals:



***To avoid that the Electrolyte-capacitors in our starters dry out the storage time should not exceed 4 months. Furthermore we recommend a regular switch on/off of the starters, as very low switching cycles (less than once per day) may cause malfunction or total fail out. For these application with low switching frequency or high ambient temperature above +70°C we offer a special version (suffix-T). The guarantee of 10 years refers to operation of the starter in ambient temperature of +40°C and respecting the above mentioned instructions.**